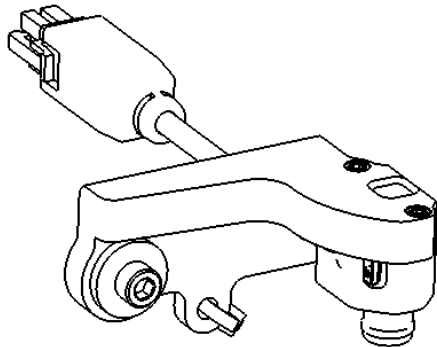


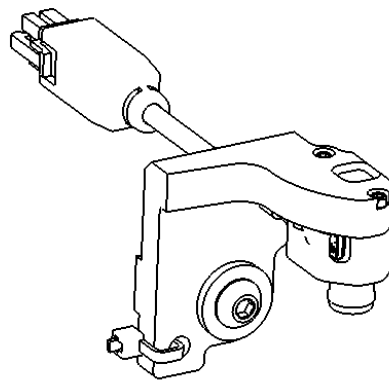


101-1011: Mark 7[®] DecapSense

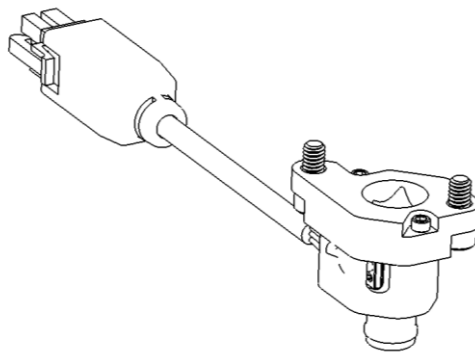
Instruction Manual V 1.1



1050 Super/RL 1100



1050 RL



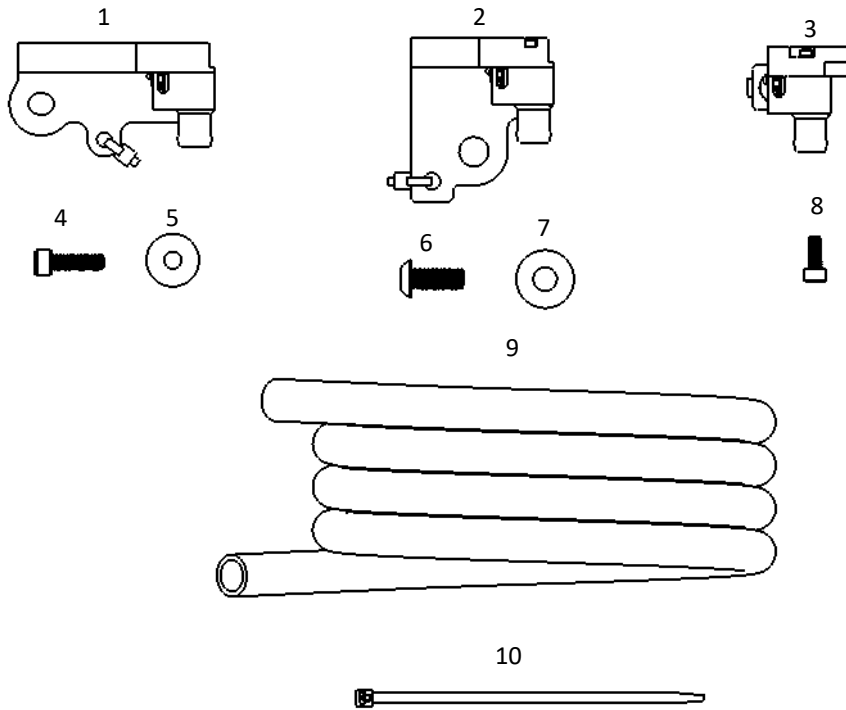
650/750 XL



Read this manual completely. Understand all safety and operating instructions. Failure to comply with the warnings and instructions may result in serious injury, illness or death.

Package Contents

Please review these contents and inform us right away if you appear to be missing any of these items:



Item No.	Description	QTY	1050 Super/ RL1100	1050 RL	650/750
1	DecapSense Core Assy – 1050 Super/RL1100	1	✓		
2	DecapSense Core Assy – 1050RL	1		✓	
3	DecapSense Core Assy – 650/750	1			✓
4	10-24 x 5/8" Cap Screw	1	✓		
5	Washer, Oversized	1	✓		
6	1/4-20 x 5/8" Rounded Hex Head Screw	3		✓	
7	Washer, Oversized	1		✓	
8	8-32 x 3/8" Cap Screw	1			✓
9	Offload Hose	1	✓	✓	✓
10	Zip Tie	1	✓	✓	✓



Set-Up Procedures:

1. Remove the spent primer bin and bracket on the 1050.
2. Install the Mark 7® **DecapSense™** and check for proper fit/alignment.
We recommend partially fastening the Mark 7® DecapSense™ to the 1050, remove the sizing die if installed in the tool head and move to the bottom position. Visually check alignment of the mount to the decapping through hole in the press frame. Due to variations in the 1050 casting some filling/sanding may be required on the mount to ensure proper alignment.
3. Attach the hose to the output fitting and route into a bucket or other spent primer collection container.
4. Plug the Mark 7® **DecapSense™** Cable into port #5 on the console.

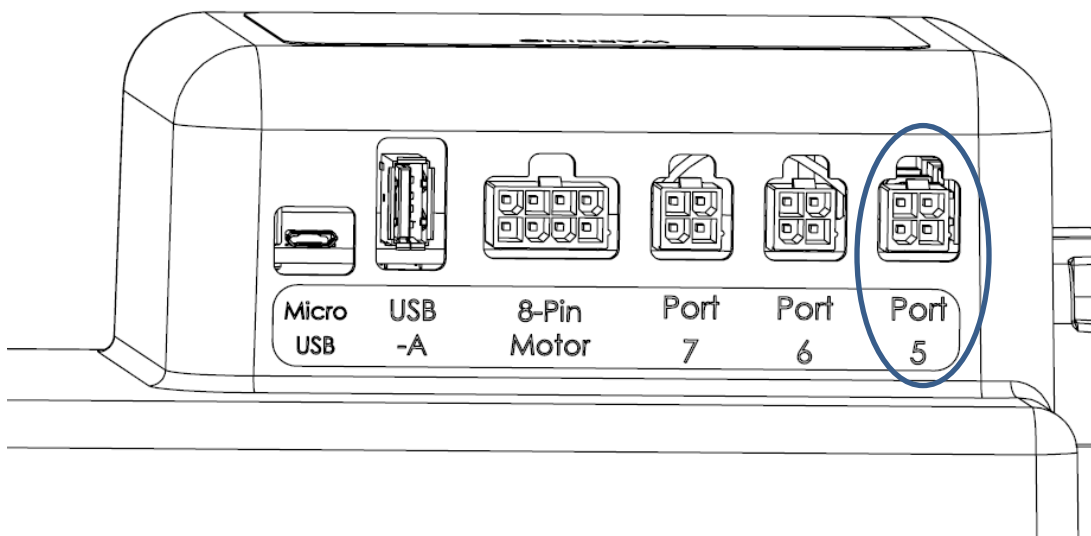


Figure 1: Port Diagram

Operating Procedures:

1. Enter the Reloader application. Note: the Mark 7® **DecapSense™** must be connected and plugged into the console before you power on the machine for the first time.
2. Calibrate and run the machine as normal. When a spent primer is not ejected the following notification box will appear *No ejected primer detected!*. After you rectify the issue press okay and proceed with normal operation.

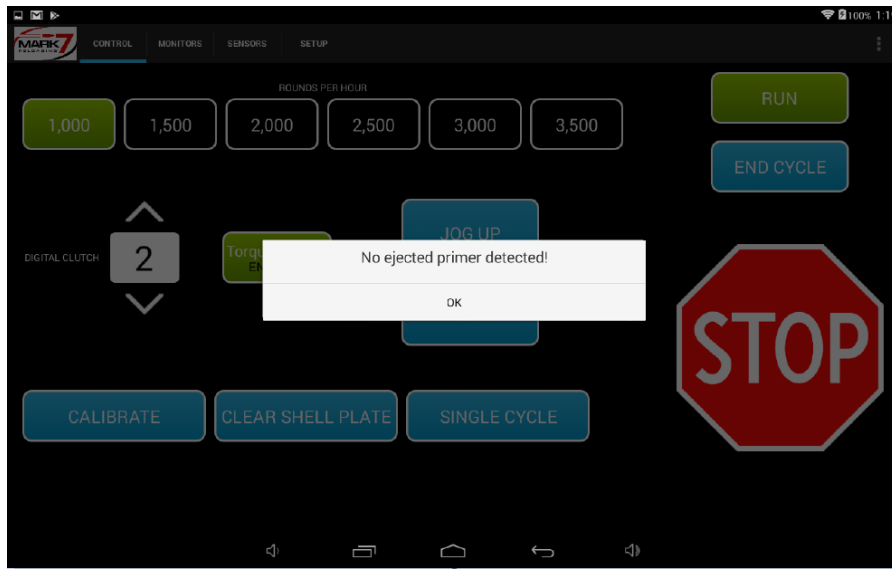


Figure 1: No ejected Primer Notification

3. Check the sensors tab on the tablet to ensure that it is enabled (green). If you wish to disable the sensor for any reason it can be done on the fly.

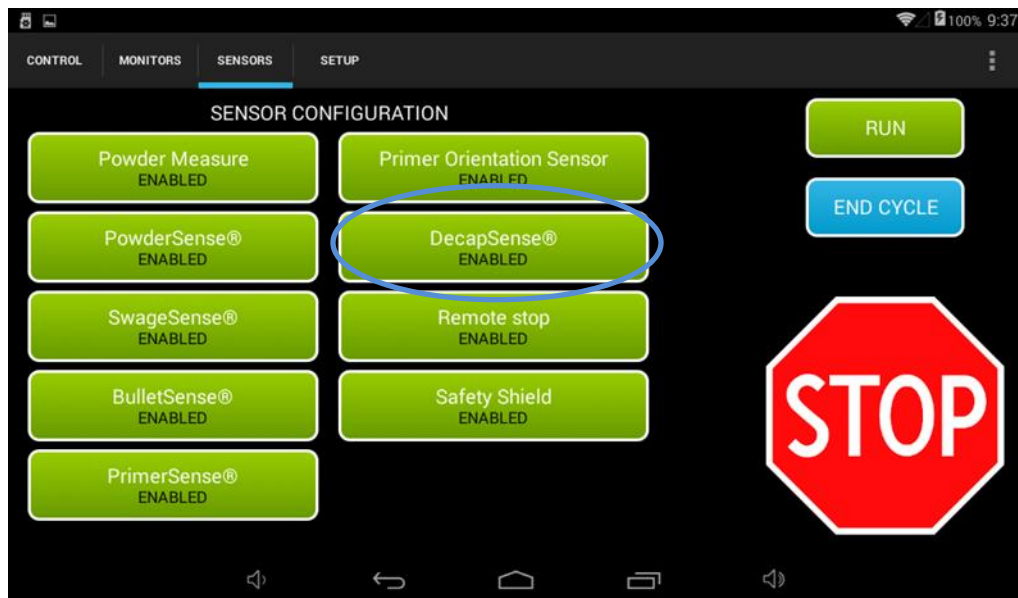


Figure 2: Enable/Disable DecapSense™



4. During operation the optical sensor may become dirty and require cleaning. The following notification box MAY appear when cleaning is required.

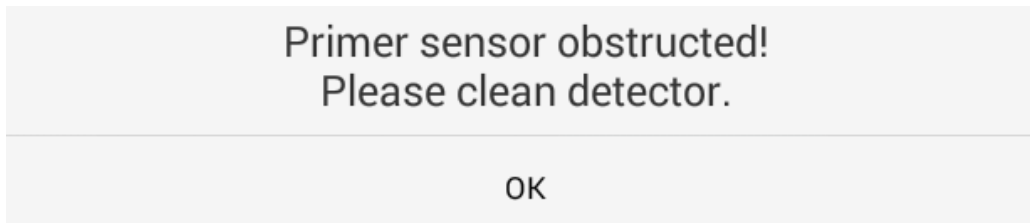


Figure 3: Sensor Obstructed Cleaning Required Message

5. To clean **DecapSense™** use compressed air and/or Isopropyl alcohol to clean the decapping hole in the press and sensor. **DO NOT USE SOLVENTS OF ANY KIND TO CLEAN THE SENSOR.**



WARNING – cleaning intervals of the Mark 7® **DecapSense™** will vary dramatically based upon many factors. **WE SUGGEST CLEANING THE MARK 7® DecapSense™ AS OFTEN AS PRACTICAL – IT IS UP-TO YOU TO ENSURE THE SENSOR IS CLEAN.**

This is a product that is designed to improve the safety of the reloading operation. **NEVER RELY ON THE DecapSense™ SENSOR.** You must monitor its use – **ALWAYS.** Always be close to your machine and available to stop the machine if it needs to be stopped

Troubleshooting

Refer to the knowledge base section on our website under **SUPPORT** for troubleshooting articles relating to setup and operation.

<http://www.markvii-loading.com/knowledgebase>

Please contact us for technical support

Phone: 1-888-462-7577

Hours: 9:00am-4:30pm, ET, M–F