



A DIVISION OF LYMAN PRODUCTS



**THE
FUTURE
OF
RELOADING**



INTRODUCING APEX 10

10 Station Manual Loading Machine



Comes Standard with:

- 1 All new 11 \hat{t} High Speed Case Feeder
- 2 Lyman Stainless Steel Pro Hold Down Die included
- 3 Mechanical Powder Measure
- 4 Standard Priming with all New Shuttle Disk Delivery System - Small/large primer conversion included
- 5 Double Guide Rod support for the tool head creates more stability

Key Features:

- Upgradeable with Mark 7 Autodrives and sensors
- On-Press Swaging
- Smooth Ergonomic Ambidextrous Handle
- Fully supported Mark 7 community and technical help included
- Supports one-pass processing and loading
- Works with new and fired brass
- Precision CNC machined aluminum and steel



Note: Product shown in photo may include optional items that must be purchased separately.

Standard features include:

- A massive, robust 10-station cast iron tool head which allows you to “have it all”:
Station 1: Case feeding
Station 2: Sizing and decapping
Station 3: Swage/Case trim
Station 4: Primer seat
Station 5: Case flare/neck expansion
Station 6: Powder drop
Station 7: Powder check
Station 8: Bullet Dropper
Station 9: Seating
Station 10: Crimping

The above is just one possible set-up. The 10 station tool head offers a large variety of options for all your reloading and case processing needs.

- All New 11" Case Feeder with variable speed motor
- Ergonomically designed operating handle, which can be assembled for right or left-hand use
- Mechanical Powder Measure
- Shuttle Disk Stacked Priming System
- Supports one-pass processing and loading with Power Trim Xpress
- Works with new AND once-fired brass
- Precision CNC machined aluminum and steel
- Upgradeable with Mark 7 Autodrives and sensors
- Fully supported Mark 7 community and technical help included
- Double Guide Rod support for the tool head for more stability
- A large assortment of accessories, upgrades and sensors are available.

Upgradeability

The Apex 10 can easily be upgraded with the following options at any point:

- Autodrive
- Primer Xpress – Electronic Oscillating Primer System
- Digital Powder Measure (only with Autodrive)
- Digital Sensors (only with Autodrive)
- Machine caliber conversion kits that include everything required to convert the press from one caliber to another
- Trimmer kit for rifle processing

PLEASE NOTE: Hold Down Die is included for Swage operation. Additional dies and bullet feeder are not included with the Apex 10 and must be purchased separately.

Dimensions

Press core dimensions are: 18" tall x 15" wide x 11" deep (45.7cm x 38.1cm x 27.9cm) Machine weight: 60lbs (15.9kg)

Apex Caliber Options: (110V version)

380 ACP	(#101-1260-08-01)
9mm/38 Super	(#101-1260-01-01)
38 Super Comp	(#101-1260-07-01)
38 Special /357 Mag	(#101-1260-03-01)
40 S&W	(#101-1260-02-01)
10mm	(#101-1260-09-01)
44 Magnum/45 Long Colt	(#101-1260-11-01)
45 ACP	(#101-1260-04-01)

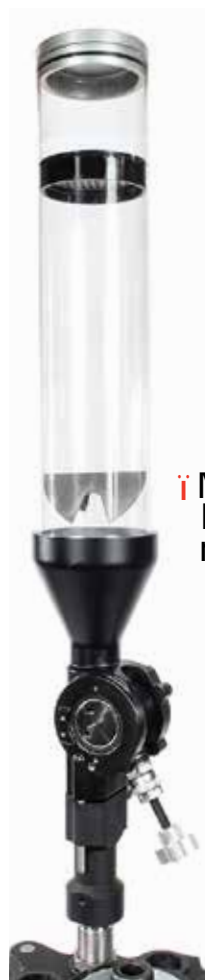
223 Rem/300 Blkout	(#101-1260-05-01)
6.5 Creedmoor	(#101-1260-13-01)
308 Winchester	(#101-1260-06-01)

See our website for pricing.

10 Station Tool Head



Ergonomic Handle



Mechanical Powder measure



Shuttle Disk Stacked Priming System

CNC Machined and Precision Fit for Smooth Operation



Double Guide Rod support for the tool head creates more stability



Apex Caliber Options: (220V version)

380 ACP	(#101-1260-08-02)
9mm/38 Super	(#101-1260-01-02)
38 Super Comp	(#101-1260-07-02)
38 Special /357 Mag	(#101-1260-03-02)
40 S&W	(#101-1260-02-02)
10mm	(#101-1260-09-02)
44 Magnum/45 Long Colt	(#101-1260-11-02)
45 ACP	(#101-1260-04-02)

223 Rem/300 Blkout	(#101-1260-05-02)
6.5 Creedmoor	(#101-1260-13-02)
308 Winchester	(#101-1260-06-02)

See our website for pricing.



WARNING: Cancer and Reproductive Harm
www.p65warnings.ca.gov

Mark 7 Revolution

Top of the line
automated ammunition
loading platform

• Loads up to
3500 rounds
per hour

• Most Advanced
Technology
on the market

• Digital motorized
powder measure
+/- .05 grains*

• Available Sensor
Technology Assures
Safe and Reliable
Loading

** +/- 0.1 grains for
stick powder types*

Note: Product shown in photo
may include optional items that
must be purchased separately.



Looking for an affordable commercial loading machine with enough power and speed to achieve your business goals? It's here! Based upon Mark 7's proven digital drive mechanism technology the Mark 7 Revolution is a machine unlike any other in the market -- a completely integrated, loading press that is powered digitally and automatically.

Differentiating Features:

- Completely integrated reloading press and drive mechanism - it's fully automated, digital, and computer controlled
- Hardened alloy steel and anodized aluminum construction
- On-board primer collator
- Ultra smooth and precise, gear-based machine movement and shell plate indexing
- Mark 7 sensors can be easily integrated
- Up to 3500 rounds per hour
- 10 station tool head
- Microprocessor monitored and controlled
- Features monitored by computer
- System works on new AND re-manufactured brass
- Downloadable machine firmware and software upgrades for life
- Supports a variety of accessories
- CNC grade planetary gearbox
- 1 year manufacturer's warranty

Looking for a top quality, commercial grade loading machine at an affordable price? The Revolution press is the one for you! Whether you are loading tens of thousands of rounds of ammunition or processing brass for resale, the ten station Revolution press has you covered.

Its compact design takes up a minimal amount of shop space yet produces quality ammunition rivaling machines costing many times as much. The press features a completely integrated press and drive mechanism that is fully automated with digital and computer control. Our full array of integrated sensors warns you of any potential problems before they can cause damage to the machine and costly downtime.

The Revolution can work with most off-the-shelf reloading dies and supports a variety of accessories. We recommend Lyman Pro Dies or the Ultimate Die Packs that are specifically designed for Mark 7 presses. (See pages 8-9) Super smooth operation, rugged design and cutting-edge technology combine to make this the press for your commercial loading business.

Mark 7 Revolution Standard Package Includes:

- 14" Case Feeder
- Bullet Feeder Pro
- Digital Powder Measure
- On-board Collated Priming
- Ultra smooth, precise, gear-based machine movement and shell plate indexing
- Supports one-pass rifle/pistol processing and loading
- Works on new AND once-fired brass
- Precision CNC machined aluminum and steel
- Compatible with Mark 7 sensors and accessories
- Fully supported Mark 7 community and technical help included

Dimensions

Measurements: Width = 28", Depth = 15", Height = 38"

PLEASE NOTE: Dies are not included with the Revolution and must be purchased separately.

Calibers:

9mm/.38 Super	(#101-1176-01)
40 S&W	(#101-1176-02)
38 Special /.357 Mag	(#101-1176-03)
45 ACP (Large Primer)	(#101-1176-04)
223 Remington	(#101-1176-05)
308 Winchester	(#101-1176-06)
38 Super Comp	(#101-1176-07)
380 ACP	(#101-1176-08)
10mm	(#101-1176-09)
45 ACP (Small Primer)	(#101-1176-10)
458 SOCOM	(#101-1176-11)
44 Magnum /.45 Long Colt	(#101-1176-12)
7.62 x 54R	(#101-1176-13)
7.62 x 39	(#101-1176-14)
300 AAC	(#101-1176-15)
6.5 Creedmoor	(#101-1176-16)

**Please contact our sales department for information
888-462-7577 AND PRESS OPTION #1**

INTERNATIONAL CUSTOMERS!

**Please note that ITAR regulations affect international sales of the Revolution.
Please contact our Sales Department to discuss our international solutions.**

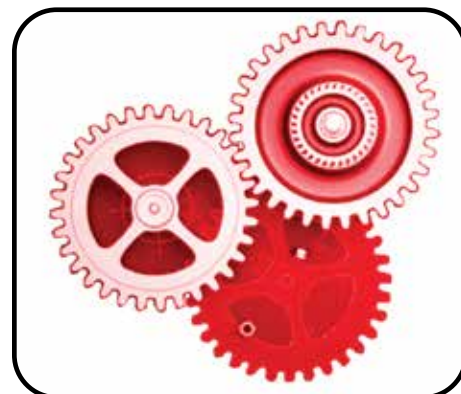
Mark 7 Autodrives

Automate Your Press

Tired of pulling the handle of your press over and over and over? The Mark 7 Autodrive will fully automate your Dillon 650, 750, 1050, 1100 and Mark 7 Apex 10 or Evolution manual presses for speed, efficiency and performance. The Autodrive is packed with features that make it the most advanced system ever designed. The patented digital drive system is computer operated allowing you to fully control the speed, torque, and dwell of the press with a simple to use high definition tablet. This is a true "plug and play" system that makes it easy to mount and set-up on your press. The included TorqueSense and Digital Clutch sensors protect the press and system if anything gets out of place. The Autodrive controller can also accept additional sensor options for the ultimate level of protection. Autodrives come with their own rugged base and a drilled and tapped press mounting plate. The high torque motor and precision machined components combine for super smooth operation.



**All Autodrives
include a 10"
High Definition
Tablet and Mount**



Digital Clutch/Torque Sense

Included as a standard item on each machine is our patented digital clutch technology that is adjustable on-the-fly.

*Included with all Autodrive units



Dillon 650/750 Pro Autodrive

- Microprocessor controlled
- Includes 10" HD tablet
- Adjustable speed settings from 900 to 1800 rounds/hour (Note speeds over 1400 are for brass processing only)
- Adjustable digital clutch
- Digitally controlled jog and stop functions
- High torque motor with reliable direct drive operation
- Includes DecapSense, TorqueSense and Digital Clutch
- Fits Dillon 650 and 750 presses – press not included

Dillon 650 Autodrive (#101-1017-01-01)



Dillon RL 1050/Super 1050/RL 1100 Pro Autodrive

- Microprocessor controlled
- Includes 10" HD tablet
- Adjustable speed settings from 1000 to 3500 rounds/hour (Note speeds can vary based on machine settings)
- Adjustable digital clutch
- Digitally controlled jog and stop functions
- High torque motor with super smooth belt driven operation
- Includes TorqueSense and Digital Clutch
- Fits Dillon 1050, CP 2000 and RL 1100 presses – press not included

Dillon 1050 Autodrive (#101-1001-01-01)



Mark 7 Apex 10/Evolution Autodrive

- Microprocessor controlled
- Includes 10" HD tablet
- Adjustable speed settings from 1000 to 3500 rounds/hour (Note speeds can vary based on machine settings)
- Adjustable digital clutch
- Digitally controlled jog and stop functions
- High torque motor with super smooth belt driven operation
- Includes TorqueSense and Digital Clutch
- Fits Mark 7 manual Apex 10 or Evolution presses – press not included

Apex 10/Evo Autodrive. (#101-1046-01-01)

Order these and most other Mark 7 products directly from markvii-loading.com

Mark 7 Sensors

Digital Sensors for Mark 7 Autodrives



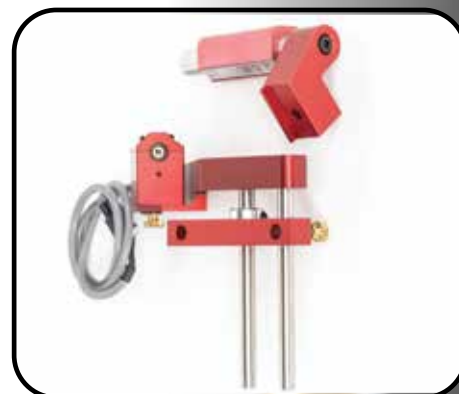
The ability to use a variety of sensors separates the Mark 7 system from the competition. Ammunition MUST be safe and reliable, whether you are a beginning shooter or a top-level competitor. Progressive and automated presses are also a large investment, so it is a wise move to protect them, your firearms and yourself with our proven sensors. Whether it is ensuring that the spent primer is removed, checking for a correct (or no) powder charge, ensuring that a bullet is present and positioned correctly, or that you are low on primers; we have you covered with the right sensor. All Mark 7 sensors are fully integrated with our computer control box; simply attach, plug in and add the sensor with your Mark 7 tablet. All sensors can be turned on and off via the tablet to coincide with your reloading needs.



PowderCheck

Automatically stops the machine if an incorrect powder level is detected inside the case.

Powder Check(#101-1038)



BulletSense™

The digital bullet orientation sensor stops the machine instantly if a vertical bullet is not present.

For Dillon 1050(#101-1082)
For Dillon 650(#101-1083)
Apex 10/Evolution/Revolution(#101-1059)



Optical DecapSense™

Optical sensor that stops the machine and alerts you when a decapped primer is not present. *Included with all 650/750 Autodrives

For Dillon 1050 Super(#101-1011-01)
For Dillon 1050 RL(#101-1011-02)
For Dillon 650/750*(#101-1011-03)
Apex 10/Evolution/Revolution(#101-1036)



SwageSense™

The first ever electronic sensor system that can stop the machine when unexpected primer pocket obstructions are sensed. (Not compatible with Dillon 650/750)

For Dillon 1050(#101-1015)
For RL 1100(#101-1204)
Apex 10/Evolution/Revolution(#101-1031)



Wired Remote Stop Switch

Machine can stop instantly when the red button is pressed.

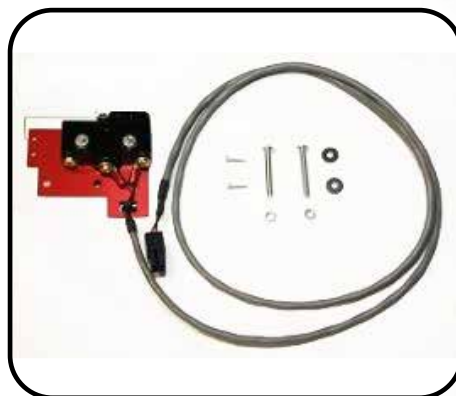
Remote Stop(#101-1016)



Primer Orientation Sensor

Will stop your press in the event of a primer that is missing, upside down, misaligned, or not set deep enough.

Apex 10/Evolution/Revolution(#101-1040)



PrimerSense™

Proprietary digital sensing mechanism that stops the machine when the primer supply is low.

Dillon 650/750/1050 Only(#101-1009)

Lyman[®] STAINLESS STEEL Pro Dies

CUSTOM DESIGNED FOR MARK 7 AND OTHER PROGRESSIVE LOADING PLATFORMS



Lyman Pro Trim Dies



Lyman Pro Trim Dies are made in the USA to Lyman's highest quality standards. Made from stainless steel for a lifetime of use. Pro Trim Dies are threaded on the bottom in 7/8-14 to fit all Lyman, Mark 7, and all other reloading presses on the market. The top thread is 13/16-20 for use with Lyman's new press mounted trimmer or many of the other popular press mounted trimmers on the market.

Trim Die 223 Rem	(#7702100)
Trim Die 300 AAC	(#7702101)
Trim Die 308 Win.	(#7702102)



Lyman Pro Case Flare Dies



Our case flare dies are especially designed for use with progressive and automated reloading presses. The long tapered expanding plug allows you to adjust for just the right amount of case flare to properly position a bullet for seating. Our Case Flare Die is also made of corrosion resistant stainless steel which protects it from rust and keeps it looking like new for a lifetime of use.

9mm	(#7701105)
40 S&W	(#7701106)
45 ACP	(#7701107)
44 Mag	New Caliber* (#7701108)
38/357	New Caliber* (#7701109)



Universal Spring Loaded Decapping Die



Lyman's Universal Spring Loaded Decap Die is equipped with a spring-loaded decapping rod system that ensures the primer is forcefully ejected from the primer pocket every time. This die works great for processing brass on automated and progressive presses, as well as for prepping brass for cleaning on standard turret and single station presses. Works on all calibers 22 through 45 except for 378 and 460 Weatherby. (Will not remove Berdan primers.)

Univ. Spring Loaded Decap Die	(#7701100)
---	------------



Stainless Pro Carbide Sizing Dies



Tungsten carbide sizing dies were pioneered by Lyman, now we have made them even better. Our new Pro Carbide die bodies are made of stainless steel which is noted for its toughness and anti-corrosion qualities. No more rusted dies! Our sizing dies are equipped with highly polished carbide rings for the ultimate in wear resistance and reduced sizing force. The carbide rings have a generous radius on the mouth to allow cases to easily align on progressive presses. Rifle dies also include our super slick carbide expander buttons to reduce case stretch. In addition, the sizing dies are equipped with a spring-loaded decapping rod system to ensure that the primer is forcefully ejected from the primer pocket every time.

9mm	(#7704230)
38 Super	(#7704232)
40 S&W/10mm	(#7704234)
45 ACP	(#7704236)
380 Auto	(#7704238)
223	(#7704240)
300 AAC	(#7704244)
6.5 Creedmoor	(#7704246)
308	(#7704242)
38 Spec/357 Mag	New Caliber* (#7704231)
44 Mag	New Caliber* (#7704235)
45 Colt	New Caliber* (#7704237)
338 Lapua	New Caliber* (#7704248)
30-06	New Caliber* (#7704250)
45-70	New Caliber* (#7704252)
7.62x39	New Caliber* (#7704254)
7.62x54R	New Caliber* (#7704256)



Lyman Pro Series Micrometer Taper Crimp Dies



Our Micrometer Taper Crimp Die gives you exact the amount of crimp that you want. The Taper Crimp Die has a micrometer adjustable head for precise positioning of the floating crimp sleeve. If you want to change your bullet crimp a few thousandths of an inch, simply turn the micrometer head to the required setting. The floating crimp sleeve centers the cartridge and applies a perfect taper crimp. Our Micrometer Taper Crimp Die is also made of corrosion resistant stainless steel which protects it from rust and keeps it looking like new for a lifetime of use.

9mm	(#7704554)
38 Super	(#7704580)
.40 S&W/10mm	(#7704570)
.45 Auto	(#7704590)
380 ACP	(#7704560)
223	(#7704600)
300 BLK	(#7704610)
6.5 Creedmoor	(#7704630)
308	(#7704620)
38 Spec/357 Mag	New Caliber* (#7704558)
44 Mag	New Caliber* (#7704575)
45 Colt	New Caliber* (#7704585)
7.62x39	New Caliber* (#7704605)
7.62x54R	New Caliber* (#7704607)
338 Lapua	New Caliber* (#7704612)
30-06	New Caliber* (#7704614)
45-70	New Caliber* (#7704625)



Lyman Pro Micrometer Seating Dies



Our Micrometer Seating Die gives you exact bullet seating length and minimal run-out. The seating die has a micrometer adjustable seating head for precision bullet seating length. If you want to change your bullet seating depth a few thousandths of an inch, simply turn the micrometer head to the required setting. Its floating bullet seating punch centers the bullet on the case and eliminates excessive run-out. Made of corrosion resistant stainless steel which protects it from rust and keeps it looking like new for a lifetime of use.

9mm	(#7704354)
38 Super	(#7704380)
40 S&W/10mm	(#7704370)
45 ACP	(#7704390)
380	(#7704360)
223	(#7704400)
300 BLK	(#7704410)
6.5 Creedmoor	(#7704430)
308	(#7704420)
38 Spec/357 Mag	New Caliber* (#7704358)
44 Mag	New Caliber* (#7704375)
45 Colt	New Caliber* (#7704385)
7.62x39	New Caliber* (#7704405)
7.62x54R	New Caliber* (#7704407)
30-06	New Caliber* (#7704415)
338 Lapua	New Caliber* (#7704425)
45-70	New Caliber* (#7704435)

* New Calibers are being built now and most are expected to be available by year end 2021



Ultimate Die Packs

The Ultimate Die Pack contains 6 dies:

- Universal Decapping Die*
- Universal Hold Down*
- Carbide Sizing Die
- Expansion Die
- Micrometer Seating Die
- Micrometer Crimping Die

* Pistol Die sets contain Lyman® Pro Decapping and Hold down dies; Rifle Die sets contain FW Arms™ Decapping and Hold downs which use auto-centering technology.

9mm	(#101-1170-01)
38 Super	(#101-1170-02)
38 Special/357 Mag	(#101-1170-03)
357 Magnum	(#101-1170-04)
40 S&W/10mm	(#101-1170-05)
10mm	(#101-1170-06)
44 Magnum	(#101-1170-07)
45 ACP	(#101-1170-08)
45 Colt	(#101-1170-09)
380 Auto	(#101-1170-10)
223	(#101-1170-11)
300 BLK	(#101-1170-12)
6.5 Creedmoor	(#101-1170-13)
308 Win/7.62x51NATO	(#101-1170-14)
7.62x54R	(#101-1170-15)
7.62x39	(#101-1170-16)



Universal Hold-Down Die

The Universal Hold-Down Die is designed for use on Mark 7 and other progressive presses which swage primer pockets. The die is equipped with a sturdy rod which is designed to reach down inside the case and hold the case firmly in position as the swaging operation takes place. This prevents cases from being torn out of the shell plate damaging it and the brass. Two rods are included to cover the full range of rifle and pistol cases. The die body is also made of corrosion resistant stainless steel which protects it from rust and keeps it looking like new for a lifetime of use.

Universal Hold-down Die (#7701101)



Lyman Pro Die Packs

Designed for the tremendous volume of our Mark 7 presses, every aspect of these precision dies was carefully engineered for top performance. Of course, they work great in regular progressive presses as well as turret and single station presses. Our first consideration was the material of the dies. Our size, seat and crimp dies are all made of stainless steel which was chosen for its toughness and anti-corrosion qualities. No more rusted dies! Our sizing dies are equipped with highly polished carbide rings for the ultimate in wear resistance and reduced sizing force. In addition, the sizing dies are equipped with a spring-loaded decapping rod system to ensure that the primer is forcefully ejected from the primer pocket. Our rifle sets get our famous M die neck expander, with its famous two step expander plug for just the right amount of neck tension and case mouth flare. The pistol sets include our flare die which are designed to allow bullets to properly sit on the case mouth prior to seating. Next is our Micrometer Seating die. This seating die has a micrometer adjustable seating head for precision bullet seating length. Its floating bullet seating punch centers

the bullet on the case and eliminates excessive run-out. Finally, each set is equipped with a taper crimp die to fully remove any case mouth flare and to provide improved bullet retention. Lyman Pro dies offer more features at a better price than any competitive dies available!

9mm	(#7701000)
38 Super	(#7701004)
40 S&W/10mm	(#7701008)
45 ACP	(#7701012)
380 Auto	(#7701016)
223	(#7701020)
300 BLK	(#7701028)
6.5 Creedmoor	(#7701032)
308 Win	(#7701024)
38/357	New Caliber* . . . (#7701002)
44 Mag	New Caliber* . . . (#7701010)
45 Colt	New Caliber* . . . (#7701011)
338 Lapua	New Caliber* . . . (#7701036)
30-06	New Caliber* . . . (#7701040)
45-70	New Caliber* . . . (#7701044)
7.62x39	New Caliber* . . . (#7701048)
7.62x54R	New Caliber* . . . (#7701050)

Two-Step Neck-Expanding (M) Pro Dies

Improves accuracy of cast and jacketed bullet reloads. Doesn't stretch cases as does standard expander button. Extends case life. A "Must-Have" die for the cast or flat-base bullet user.

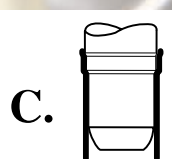
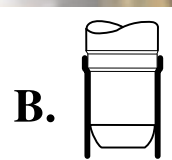
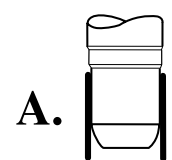
Many reloaders consider Lyman's Neck Expanding (M) Die a valuable tool for improving the accuracy of their reloads. The die's expander plug has two steps. (See illustration)

1) The first step expands the inside of the case neck to just under bullet diameter for precise case neck tension in the finished reload. (See Illus. A.)

2) The second step expands the case mouth to bullet diameter or slightly over. This allows the jacketed or cast bullet to be started perfectly centered in the case mouth and properly aligned with the axis of the case neck. (See Illus. B.)

NOTE: By adjusting the neck expanding plug slightly deeper, Step 2 also provides a slight flaring of the case mouth for reloaders using cast bullets. (See Illus. C.)

22S	New Caliber* . . . (#7704160)
30M1	New Caliber* . . . (#7704162)
30S	New Caliber* . . . (#7704163)
30L	New Caliber* . . . (#7704164)
45-70	New Caliber* . . . (#7704165)
26	New Caliber* . . . (#7704166)
338	New Caliber* . . . (#7704167)



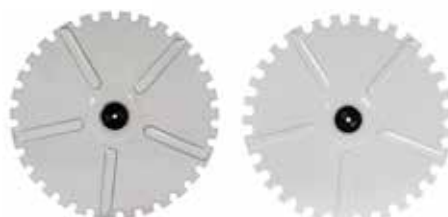
* New Calibers are being built now and most are expected to be available by year end 2021

Mark 7 11" *High Speed* Case feeder

The Speed You Need
To Keep Up With
The Fastest
Progressive
Presses

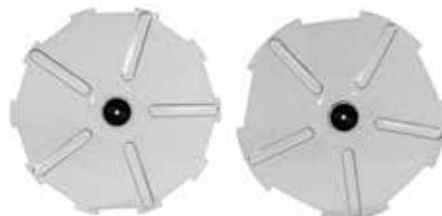


- All metal construction for strength and durability
- 11" bowl equipped with trap door for easy case removal
- Variable speed motor can be fine tuned to your desired speed
- Automatic advanced proximity on/off switch controls case feeding
- Quick detach funnel adapter
- Reverse button to easily clear feeding issues
- Pole works with Apex 10/Evolution presses
- Available with small or large pistol, or small or large rifle caliber plates



Small Pistol

Large Pistol



Small Rifle

Large Rifle

Mark 7 11" High Speed Case Feeder

Mark 7's new 11" High Speed Case Feeder is designed to handle the demanding speeds of our Autodrive units, but also works great on hand operated progressive presses. The 11" Case Feeder offers high grade performance and has innovative features to make your loading operations smooth and easy. We started with all metal construction for strength and durability and added a variable speed DC motor which

can be fine turned for your specific application. An advanced and reliable proximity switch controls the flow of cases to the press. Our unique bowl design has a trap door which makes it easy to remove cases as well as an adjustable funnel to handle most calibers. The Case Feeder also features a quick detach funnel adapter for easy removal and installation. Two versions are available: Mount directly to your Apex10 press or Universal mount which attaches to your bench, just where you need it.



Apex/Evo 110V Small Pistol (#101-1073-01-01)
Apex/Evo 110V Large Pistol (#101-1073-02-01)
Apex/Evo 110V Small Rifle (#101-1073-03-01)
Apex/Evo 110V Large Rifle (#101-1073-04-01)
220V Versions Also Available

Mark 7 11" Case Feeder Plates

Small Pistol (#101-1267-01)
Large Pistol (#101-1267-02)
Small Rifle (#101-1267-03)
Large Rifle (#101-1267-04)

Power Trim XpressTM

Trims and Case Forms
300 Blackout from .223
Brass with One Stroke!



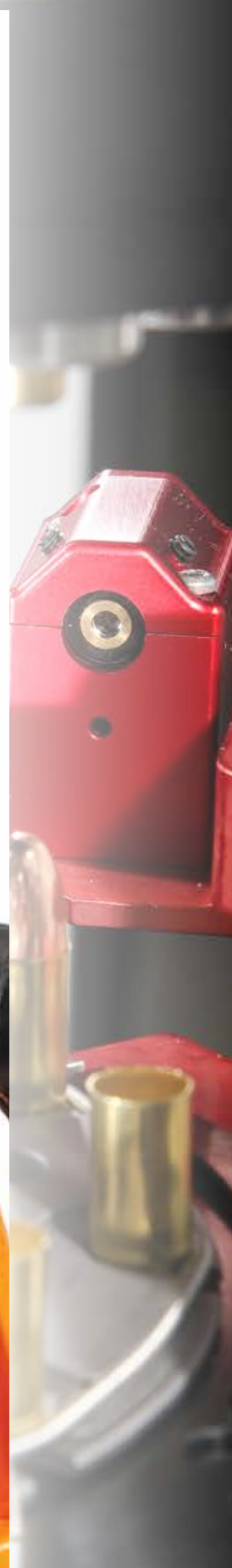
- Electric Press Mounted Case Trimmer
- Slim motor design takes up minimal room
- 1-1/2" vacuum manifold to evacuate chips
- Powerful industrial grade variable speed DC motor
- Replaceable carbide cutter
- Uses standard Trim-Dies
- Works on any Progressive, Automated or Single Station Press

Our new Power Trim Xpress case trimmer will tackle the toughest commercial trimming jobs yet is priced to fit any reloaders budget. The trimmer features a powerful variable speed DC motor. The motor is often found on industrial CNC equipment, so you know that it is a tough work horse, yet it is also a slim design that takes up minimal room.

The trimmer will speed through standard trim jobs as well as easily handle cartridge conversions such as 223 to 300 Blackout. NOTE: Offset tool head is required for 223 conversion)

The trimmer will accept standard trim dies and is equipped with a vacuum manifold to cleanly evacuate chips. In addition, the trimmer comes with a long-lasting carbide cutter.

Power Trim Xpress(#101-1196)



Primer Xpress^{AE}

Oscillating Automated Priming System

• Add primers easily without stopping, through the built-in funnel

• Large Hopper holds 300+ primers

• Fail safe sensor detects incorrect primers and stops operation



Patented

• Oscillating primer reservoir effortlessly orients primers

• Single slot feed disc mechanism for positive, reliable primer positioning

Mark 7's new Automated Priming System contains totally new, patent pending technology which provides nearly 100% successful primer orientation for your loading machine.

Hundreds of hours of development and testing have gone into the design of this system, along with the loading of hundreds of thousands of primers to ensure consistent, trouble-free operation.

This completely unique design features an oscillating primer reservoir which effortlessly orients primers and allows continuous primer feeding.

No more stopping your machine to reload primers using clumsy tubes! Simply add more primers into the built-in funnel without interruption to your loading operation. The large hopper can hold 300+ primers and includes a tough polycarbonate safety cover, which also keeps dust and debris out of the system.

In the unlikely event that an up-side-down primer does make it into the feed ramp, our failsafe sensor will detect it and sound an alarm for manual presses and stop the operation on automated machines.

In addition, change over between small and large size primers is easy to do and all parts are included. Dual optical sensors automatically start/stop the feed system to provide primers as needed. Primers are fed into your machine using a simplified single slot feed disc mechanism for positive, reliable primer positioning.

Works on Apex 10 and Evolution presses. Consumer friendly operation and price, with commercial level performance!

Primer Xpress (#101-1192)

Mechanical Powder Measure

When using a press mounted powder measure there is no need to have a separate powder measure mounted to your bench saving space and time. Superior engineering means our powder measure is fully loaded with features. Accuracy within plus or minus a tenth of a grain (± 0.1 gr). Powder hopper capacity of 5,000 grains, and integrated powder screen to help keep out any unwanted debris. Powder baffle to ensure consistent and repeatable powder drops. Case actuated operation, with built in compliance to work with varying case lengths. No trimming is required. The rotating barrel is built using deep groove ball bearings, and oil impregnated bronze bushings on all sliding surfaces to insure smooth operation and extended life. All stainless-steel internals for years of worry-free use with minimal wear. Simple disassembly for cleaning and converting from pistol to rifle and rifle to pistol.



Mechanical Powder Measure (#101-1190)

Digital Powder Measure

Only available for the Revolution and Apex 10 or Evolution when paired with an Mark 7 autodrill, the Mark 7 electronic powder measure incorporates a precision metering drum that's enclosed in a CNC machined upper housing. The drum is fully supported by a pair of sealed ball bearing braces and is actuated by a high torque servo motor through an enclosed timing belt. Telescoping powder funnels for small and large rifle and pistol calibers are included with the powder measure.

- Works smoothly with all powder types including extruded stick powder.
- High capacity powder reservoir
- Manual setup mode for quick charge adjustment

Under our testing conditions the accuracy of the measure is ± 0.1 grains @ 12.2 grains.



Digital Powder Measure (#101-1147)



Powder Measure Funnel & Die Kits

Funnel & Die Kit Digital Pistol (#101-1071-01)
 Funnel & Die Kit Digital Small Rifle (#101-1071-02)
 Funnel & Die Kit Digital Large Rifle (#101-1071-03)
 Funnel & Die Kit Digital 6.5 (#101-1071-04)
 Funnel & Die Kit Mechanical Pistol (#101-1071-05)
 Funnel & Die Kit Mechanical Sm Rifle (#101-1071-06)
 Funnel & Die Kit Mechanical Lg Rifle (#101-1071-07)
 Funnel & Die Kit Mechanical 6.5 (#101-1071-08)



Powder Measure Conversion Kits

• Includes all parts needed to convert your powder measure from Pistol to Rifle or the other way around.
 • Compatible with Apex 10 mechanical powder measures and digital powder measures with one-piece cast body.
 Convert to Pistol (#101-1270-01)
 Convert to Rifle (#101-1270-02)



Automated Priming System

How many times have you wished for a way to avoid the endless task of filling and refilling primer tubes and then having to dump them into your primer feed?

It works by using a small vibratory bowl feeder that causes primers to walk up a circular ramp within the bowl. The primers then pass a knockdown (to eliminate sideways primers), then pass a series of 3 knockouts (to eliminate upside down primers) and finally they slide down a ramp. The down ramp feeds a rotating primer disk that precisely positions primers for insertion into cases.

- Easily convertible for small or large primers.
- Approximately 300 to 500 capacity.

Revolution (#101-1166)
Evolution (#101-1065)



Mr. Bullet Feeder[®] Standard

If you are going to use an auto loader you will need a bullet feeder. A new dropper system allows the model to function well by eliminating the need for any spring or small plastic parts in the dropper head, and works entirely powered by gravity and a geometric design.

If you have never tried a bullet feeder on your progressive reloader - what are you waiting for?! It cuts the time and effort involved in reloading practically in half! A must-have item for any auto loader.

The expanding powder funnel supplied is for the Dillon reloading machines only. Cannot be shipped internationally.

Available in Pistol 9mm/.38, 10mm/.40, .45 and Rifle .223 and .308

Mr. Bullet Feeder Standard. (#301-1515)



Mr. Bullet Feeder[®] Pro

This is the newly developed, jointly-engineered MBF Professional version bullet feeder. It was designed with the needs of the Revolution[™] in mind. When you purchase the MBF Pro from Mark 7 Reloading you receive the custom-made stand that supports the MBF Pro that bolts directly into the Revolution[™] baseplate. A universal stand is also available to mount directly to your workbench.

Available in Pistol 9mm/.38, 10mm/.40, .45 and Rifle .223, .308, 6.5 Creedmoor and 300 Blackout

Mr. Bullet Feeder Pro (#101-1165)



14" Case Feeder

14" Commercial Grade Case Feeder with mounting pole.

Select the Caliber and Voltage you would like your Case Feeder configured, Caliber Conversions kits, additional caliber plates and individual parts are available.

Available in Small Pistol, Large Pistol, Small Rifle, Large Rifle, 300 AAC, 6.5 Creedmoor, 458 SOCOM, 45-70, and 7.62x39mm.
Available in 110 and 220V.

14" Case Feeder (#101-1164)



Mr. Bullet Feeder[®] Standard Conversion Kits

Conversion kits are available allowing you to use your Mr. Bullet feeder for more than just one caliber. Many reloaders have a second complete tool head for their 2nd caliber of choice, voiding the need to reset the dies.

Kits include a complete dropper assembly, a custom powder funnel (for pistol calibers) and a new collator plate for the caliber of choice. This will allow you to switch your bullet feeder from one caliber to the next in a matter of minutes.

Available in Pistol 9/38S, 10mm/.40, .45 and Rifle .22, .308, and 6.5 x 55

Standard Conversion Kits (#301-1300)



Mr. Bullet Feeder[®] Pro Conversion Kits

Conversion kits are available allowing you to use your Mr. Bullet feeder Pro for more than just one caliber. Many reloaders have a second complete tool head for their 2nd caliber of choice, voiding the need to reset the dies.

Kits include a complete dropper assembly, a custom powder funnel (for pistol calibers) and a new collator plate for the caliber of choice. This will allow you to switch your bullet feeder from one caliber to the next in a matter of minutes.

Available in Pistol 9/38S, 10mm/.40, .45 and Rifle .223 and .308

Pro Conversion Kits (#301-1296)



Caliber Conversion Kits

Machine Conversions are a great way to maximize your investment. The Mark 7 Revolution and Evolution Caliber Conversion Kits contain the following: Shell plate, Case Feed Ram, and Case Feed Adapter.

Case Feeder, Bullet Feeder, priming and powder funnels conversions are sold separately.

9mm/38 Super(#101-1068-01)
40 S&W/10mm(#101-1068-02)
38 Spec/357(#101-1068-03)
45 ACP(#101-1068-04)
223/300 BLK(#101-1068-05)
308/6.5 Creedmoor(#101-1068-06)
38 Super Comp(#101-1068-07)
380 Auto(#101-1068-08)
44 Mag/45 Colt(#101-1068-09)
458 SOCOM(#101-1068-10)
7.62 x 39(#101-1068-11)



Offloading System

This offloading system for your press automatically captures your pistol or rifle brass or loaded rounds and funnels them gently into your own receptacle. Use a 5 gallon bucket at the end or virtually any container to capture your output. The included hose slows down your rounds as they descend to your receptacle. Sized appropriately for any size pistol or rifle brass or loads. Funnel is made of durable plastic and wipes clean. Attaches to the standard bracket on your machine through a strong magnet. Works with Apex 10, Evolution, Revolution and most Dillon progressive presses with Autodrive.

Offloading System(#101-1104)



9mm 100 Hole Ammo Checker Block

High volume reloaders and competition shooters know the significance of quality reloaded ammunition, and the importance of dimensionally correct reloads. Lyman now offers a 100-hole 9mm Ammo Checker. This gauge is made to SAAMI minimum chamber specifications, meaning if your reloaded ammunition drops in the gauge it will chamber in your firearm. With the large 100-hole block it is now faster and easier for the high volume reloader and competition shooter to ensure their reloaded ammunition is dimensionally correct and will function flawlessly in their firearms.

9mm 100 Hole Ammo Checker (#7833036)



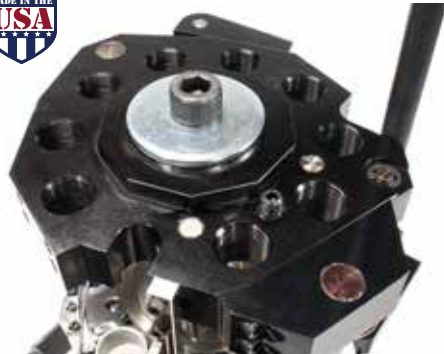
Cast Spare Tool Head for Apex 10

The most efficient way to speed up caliber change overs is to purchase an additional tool head and die set. With a spare tool head caliber change overs can be performed in as little as 15 minutes.

Apex Spare Tool Head(#101-1252-01)

Apex Offset Tool Head(#101-1252-02)

Note: Offset tool head is used for converting 223 to 300 blackout. It is not needed for standard case trimming.



CNC Spare Tool Head for Evolution or Revolution

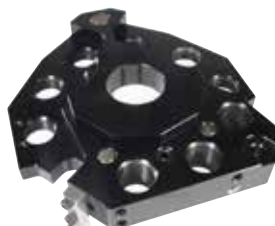
The most efficient way to speed up caliber change overs is to purchase an additional tool head and die set. With a spare tool head caliber change overs can be performed in as little as 15 minutes.

Evo/Rev Spare Tool Head (#101-1027-01-02)

Evo/Rev Offset Tool Head (#101-1027-02-02)

Note: Offset tool head is used for converting 223 to 300 blackout. It is not needed for standard case trimming.

Offset
Tool Head



Tool Head Stand

*Tool head and caliber parts not included for the tool head stand

For all our reloading presses this is a must have for your press caliber conversions. Use this holder to hold your spare tool heads nearby with your dies and spare powder measure already installed. This will make your machine conversions a snap - just change your shell plate, and other components and then as a last step drop your spare tool head (already configured with dies and powder measure) right onto your press, align the press and you are now loading your secondary caliber. Made of high-grade aluminum all CnC machined and polished to a high shine. Contains the Mark 7[®] logo (product may be shown with optional features).

Tool Head Stand (#101-1057)



Mirror Assembly

The Mark 7 Mirror Assembly comes complete with an 11" Articulating arm. The locking control knobs release or increase tension allowing you to find the desired position. This articulating aluminum arm simplifies the mounting and placement of the 1/8" 6"x6" Acrylic mirror. The Articulating arm attaches to a galvanized clamp that has a 7/8" jaw opening. This assembly requires no drilling and is the perfect solution to monitor the amount of brass and bullets in the collators.

Color is red and black.
Sold one per package.

Mirror Assembly (#101-1149)



Mark 7 Data Board

Keep track of exactly what you're loading on our convenient Mark 7 Data Board.

5" x 7" whiteboard comes with 2 metal clip hangers to mount on or near your press.

Medium point dry erase black marker and clip are also included.

Mark 7 Data Board (#101-1150)



Machine Cover

This cover is made of heavy duty nylon that will protect your investment from the occasional water spill, dust, and other debris floating around your loading operation. Display with pride your investment with this attractive black cover complete with logo on the front. Specific features include:

- Fits all Products, except 650 Autodrive line
- Tailor fit for easy on / off access with dual front zippers that reach to the top of the cover
- Heavy-duty, black, dust and water-resistant
- Nylon, embossed with Mark 7[®] logo
- Top is padded and lined
- Front and back panels are lined with soft material to not scratch your prized possession
- Heavy duty zippered front panel
- Measures over 37" long x 20" deep x 19" wide

Machine Cover (#201-1410)



Mark 7 Mesh Hat

Show your Mark 7 loyalty in this comfortable mesh retro trucker-style black cap with Mark 7 logo embroidered on the front.

Mark 7 Mesh Hat (#0200018)



The Future of Reloading T-Shirt

Super soft tri-blend cotton-rayon-poly shirt with "The Future of Reloading" on the front and Mark 7 and Lyman logos on the back.

Medium (#0200014)
Large (#0200015)
XL (#0200016)
2 XL (#0200017)

**Please visit
our website for
replacement
parts**

How Do You Clean Your Brass?

You know Mark 7, but do you know that Mark 7 is a division of Lyman Products?

Lyman Products offers a complete line of reloading equipment and shooting accessories, including ultrasonic cleaners, and our Raytech brand offers industrial sized vibratory tumblers that are ideal for cleaning, drying and polishing large quantities of brass quickly and easily.

We would love to hear from you!

Please give us a call at 1-800-22LYMAN or email us at customerservice@lymanproducts.com and tell us about your current brass cleaning process.



Lyman TurboSonic Power Pro

Designed for high volume ultrasonic cleaning, the Turbo Sonic Power Pro's 34-3/4" heated stainless steel tank can easily handle large quantities of brass. The powerful industrial transducers aggressively deep clean and degrease cases, including primer pockets, both inside and out. The Power Pro features an all stainless design and professional controls for both timing and heat. (Item #7631734)

Visit the Lyman website at LymanProducts.com to see our full line of ultrasonics as well as our extensive listing of other reloading products.



Raytech Super Sized Tumblers

Our Raytech line of industrial vibratory tumblers are equipped with heavy duty drive systems that include amplitude adjustment, which determines how aggressive the tumbling action will be. The Adjusta-Vibe makes it possible to adjust the amplitude of the tumbler to match the job to be done. The adjustable weight system will produce a tumbling action that ranges from mild to aggressive.

The AV-40 model machines are compact, yet have a capacity of .35 cubic feet with a heavy duty cross-linked 17-inch polyethylene bowl. Noise reducing lids come standard. For even higher volume, the AV-75 model has a 21-inch diameter bowl and a .75 cubic foot capacity. The AV-40TD (Item # 23031R) and AV-75TD (Item # 23044R) models incorporate all the features of the Adjusta-Vibe models with one addition: Raytech's patented Tumble-Dump tilting plate to make emptying the tumbler quick and easy.

Visit the Raytech website at Raytech-Ind.com to see our full line of finishing equipment.
Raytech Industries
is a Division of Lyman Products.

